



The
Disability
TRUST



MORISSET, NSW



BEDROOM
5



BATHROOM
3



CAR PARK
1

LOCATION



Morisset is a quiet suburb, located on the glittering shores of beautiful Lake Macquarie. Surrounded by the Watagan Mountains, Morisset offers a tranquil combination of lakeside living overlooking the National Park.

Nearby Facilities:

- Located close to Watagan National Park with a variety of accessible walking tracks.
- Shopping options five minutes away at Morisset Square.
- Great eating out options within a 10-minute drive.
- Located close to the new Cedar Mill being developed in the heart of Morisset. This facility will be home to concert venues, cafes and restaurants, tourist accommodation and Australia's largest aquatic play park.

Would you like to know more about this property?

Call 02 4067 4600 or email hunterservices@disabilitytrust.org.au

PROPERTY INFORMATION



This accessible, SDA home is situated on a large block with ramps to access the property and a large outdoor area. Supported 24/7 by staff from The Disability Trust, you'll have freedom and control over your environment with peace-of-mind knowing that assistance is always available.

This SDA property currently has two male residents and two female residents, aged 63 to 71. The group love being out in their community, eating out and attending local parks. When they aren't in the community, the group love watching movies, listening to music, getting creative with arts and crafts and assisting with household tasks like cooking and cleaning. You will also find them enjoying the space out the back, swinging on the outdoor swings on sunny days.



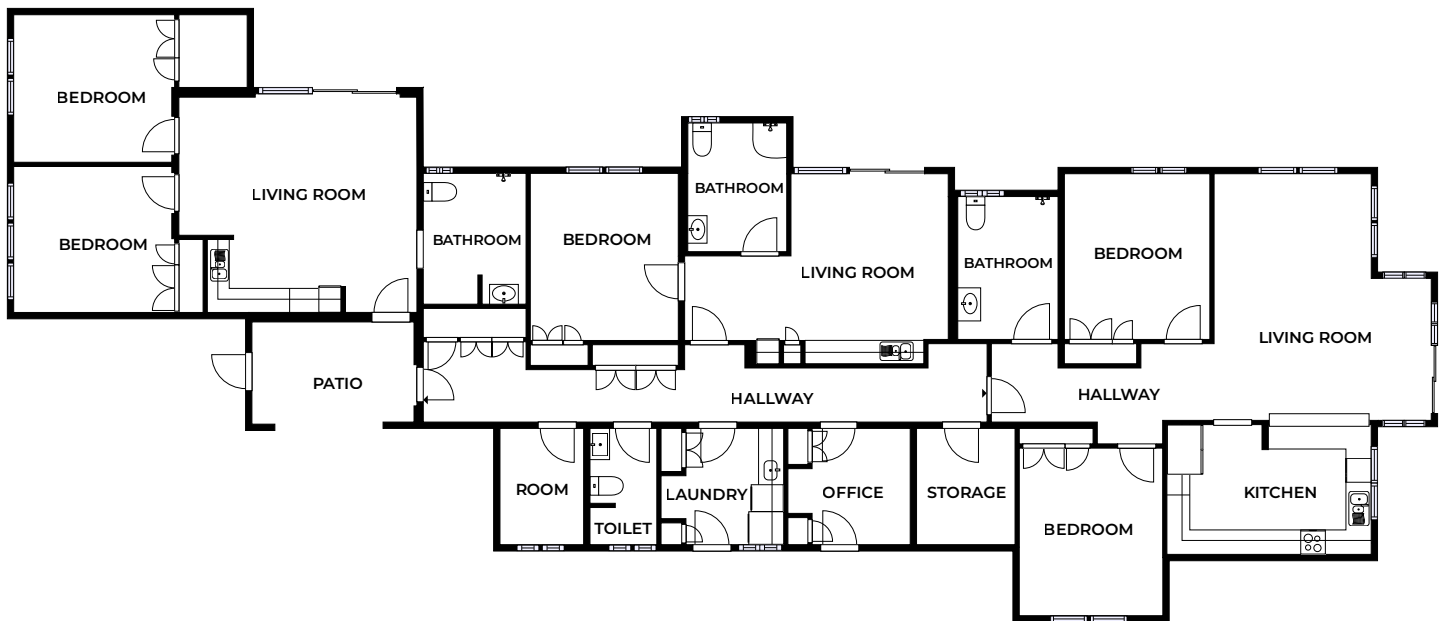
Would you like to know more about this property?

Call 02 4067 4600 or email hunterservices@disabilitytrust.org.au

PROPERTY INFORMATION

Features and Accessibility

- Specialist Disability Accommodation: High Physical Support.
- Single storey, flat interior, with vinyl and tiled flooring throughout the property.
- Five bedrooms, each with a built-in wardrobe.
- Large open kitchen and living areas.
- Wheelchair friendly with wide pathways and door frames.
- Supportive railing in main bathrooms.
- Large backyard with outdoor swings and shaded patio.
- 24/7 on-site care.



SIZES AND DIMENSIONS ARE APPROXIMATE, ACTUAL MAY VARY.

Would you like to know more about this property?

Call 02 4067 4600 or email hunterservices@disabilitytrust.org.au