



The
Disability
TRUST



BOWRAL, NSW



BEDROOM
5



BATHROOM
2



CAR PARK
2



With its serene landscapes and accessible infrastructure, Bowral presents a welcoming environment conducive to comfortable living. Enjoy a vibrant community that celebrates inclusivity, where local businesses and amenities prioritise accessibility. Whether strolling through picturesque gardens or exploring local markets, Bowral provides a supportive backdrop for a fulfilling lifestyle.

Nearby Facilities:

- 20-minute drive from the magical Fitzroy Falls.
- Located a short five-minute drive from Bowral town centre, Bradman Oval and Bong Bong Picnic Racecourse.
- Within a 10-minute drive to the Mittagong Town Centre.
- Close to breweries, acclaimed restaurants, and vibrant art galleries.
- Bowral bus and train station in close proximity.

Would you like to know more about this property?

Call 1300 347 224 or email silenquiries@disabilitytrust.org.au

PROPERTY INFORMATION



The Bowral home screams comfort and creativity. The house has two living rooms as well as a large undercover outdoor entertaining area. One bathroom has supportive railing in the shower while the other has a corner bathtub and large basin. The vacant bedroom has carpet flooring with a small built-in wardrobe.

The property is an all female house with female staff providing support. There are currently four ladies living in home who attend either day programs or supported employment throughout the week. The group enjoy watching movies, cooking, playing games, and arts and crafts. Once a month, the group goes out together to different restaurants and will often hold a pamper and disco night every few weeks.



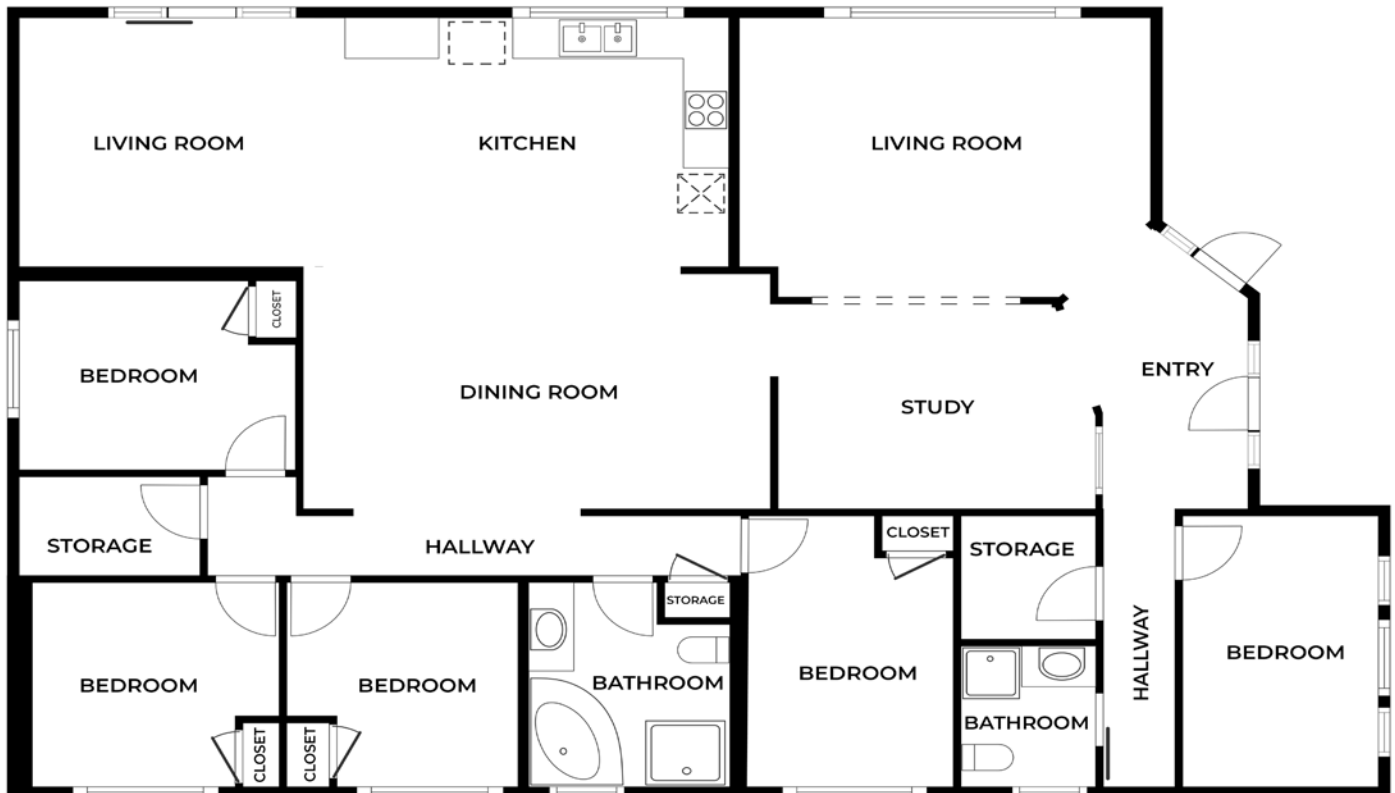
Would you like to know more about this property?

Call 1300 347 224 or email silenquiries@disabilitytrust.org.au

PROPERTY INFORMATION

Features and Accessibility

- Single storey, flat level interior, with tiled, vinyl and carpet flooring throughout the property.
- Vacant bedroom has a small built-in wardrobe.
- Supportive railing in one of the communal showers.
- Large backyard and outdoor undercover patio area.
- Large open kitchen, living and dining areas.
- Transport available with an on-site vehicle from The Disability Trust.
- 24/7 day support with an inactive sleepover. Staff provide support with mealtimes management, personal care, support with daily living skills, and transportation.



SIZES AND DIMENSIONS ARE APPROXIMATE, ACTUAL MAY VARY.

Would you like to know more about this property?

Call 1300 347 224 or email silenquiries@disabilitytrust.org.au