



The
Disability
TRUST



MORISSET, NSW



BEDROOM
5



BATHROOM
3



CAR PARK
1

LOCATION



Morisset is a quiet suburb, located on the glittering shores of beautiful Lake Macquarie. Surrounded by the Watagan Mountains, Morisset offers a tranquil combination of lakeside living overlooking the National Park.

Nearby Facilities:

- Located close to Watagan National Park with a variety of accessible walking tracks.
- Shopping options five minutes away at Morisset Square.
- Great eating out options within a 10-minute drive.
- Located close to the new Cedar Mill being developed in the heart of Morisset. This facility will be home to concert venues, cafes and restaurants, tourist accommodation and Australia's largest aquatic play park.

Would you like to know more about this property?

Call 02 4067 4600 or email hunterservices@disabilitytrust.org.au

PROPERTY INFORMATION



This Fully Accessible Specialist Disability Accommodation (SDA) home is located on a large block and features ramped access, generous indoor spaces and multiple outdoor areas. With 24/7 support provided by The Disability Trust, residents are supported to live with choice and independence, with the reassurance that assistance is always available when needed.

The main three-bedroom home currently has one vacancy and is shared by two residents aged between 63 and 71. They enjoy being active in their local community, including dining out and visiting nearby parks. At home, they enjoy watching movies, listening to music, getting creative with arts and crafts, and participating in everyday household activities such as cooking and cleaning.

The property also includes a semi-detached, self-contained two-bedroom villa with its own bathroom and private courtyard, which currently has two vacancies. This space offers a more private living environment and would be well suited to a couple or two compatible individuals, while still benefiting from 24/7 onsite support. Residents across the property enjoy access to the spacious outdoor areas, which are particularly popular on sunny days for relaxing outdoors and enjoying the swings and open space.



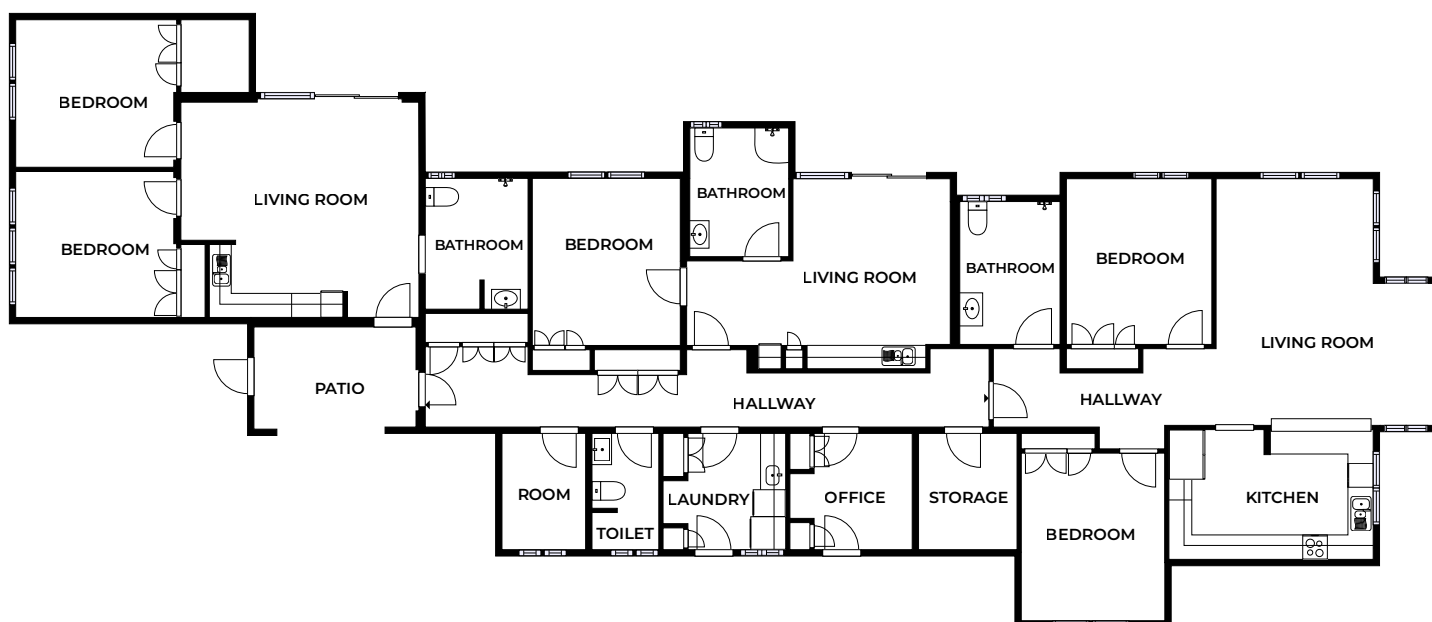
Would you like to know more about this property?

Call 02 4067 4600 or email hunterservices@disabilitytrust.org.au

PROPERTY INFORMATION

Features and Accessibility

- Specialist Disability Accommodation: Fully Accessible.
- Single storey, flat interior, with vinyl and tiled flooring throughout the property.
- Five bedrooms, each with a built-in wardrobe.
- Large open kitchen and living areas.
- Wheelchair friendly with wide pathways and door frames.
- Supportive railing in main bathrooms.
- Large backyard with outdoor swings and shaded patio.
- 24/7 on-site care.



SIZES AND DIMENSIONS ARE APPROXIMATE, ACTUAL MAY VARY.

Would you like to know more about this property?

Call 02 4067 4600 or email hunterservices@disabilitytrust.org.au